

Public Open House for Chute -à -Blondeau Agrivoltaics

Date: 24th July 2025 / 6:30 pm to 8:30 pm

Location: Chute -à -Blondeau Community Centre

Proponent Contact Information:	info@chute-a-blondeauagrivoltaics.ca
Project Name:	Chute -à -Blondeau Agrivoltaics
Maximum Nameplate Capacity:	18 MWac
Technology:	Solar Photovoltaics (PV)

PRESENTERS

Compass Greenfield Development (CGD)

Jonathan Cheszes
Rim Assaad
Jean-Luc Mainville
Seyara Wijesinghe

AGENDA

The Public Open House provided attendees with the opportunity to view poster boards displaying key Proponent and Project information. The presenting team engaged attendees, responded to their questions, and solicited their feedback on the Project.

Displayed poster boards covered the following topics:

- € CGD's Projects in Canada
- € Ontario's Power Needs
- € What is Agrivoltaics?
- € About the Project
- € Preliminary Project Design
- € Why your Municipality?
- € Regulatory & Environmental Compliance/Development Timelines
- € Recap of the April 23rd Community Meeting/Changes to the Preliminary Project Design



Please refer to Appendix A for the poster boards displayed at the public open house, which includes the project details. Please refer to Appendix B for photographs of the public open house.

OVERVIEW OF OPEN HOUSE

This meeting was attended by 2 people. Participants raised questions, and requested information about the project and its impacts. The questions raised during the open house have been summarized below. If you are reviewing these minutes and don't see your concern summarized, please reach out to the project team at: info@chute-a-blondeauagrivoltaics.ca

SUMMARY OF QUESTIONS/CONCERNS

1. Agrivoltaics Component of the Project

- a. Will there be sheep on site?*

This project will be an agrivoltaics project. Agrivoltaics is the co-existence of a farming activity and solar generation facility. Compass Greenfield Development is committed to initially siting the solar project with sheep grazing and eventually handpicked crops. CGD will partner with a local sheep farmer for the sheep grazing component of the project.

2. Preliminary Project Design

- a. Will there be backup generation attached to the system?*

It is not yet known if there will be backup generation on this site. Back-up power systems are sometimes needed for the single axis tracking system to power the motors in the event of a grid outage. Once the selection of the racking system is completed, we will then know if a backup power system is required.

3. Timelines & Decommissioning

- a. At the end of 20 years, could the contract for the project get extended?*

The contract length is 20 years. The base term is a fixed length of 20 years, and the contract does not include an automatic renewal clause. Renewal or re-contracting after the term is not guaranteed and would depend on any future IESO procurement needs, the project's performance and condition, and regulatory or market conditions at the time.

- b. What is the construction timeline? What is the overall timeline from project approval through to commissioning?*



The overall project completion will take approximately four years from the land acquisition stage. This project is a centralized procurement that is operated by the independent Electricity System Operator (IESO) and includes the following phases:

- I. Pre- IESO Contract Award
 - a. Land Acquisition - Complete in 2025
 - b. Municipal Council Support required for the IESO RFP Bid Submission – Ongoing
 - c. RFP Bid Submission - October 16, 2025
- II. IESO Contract Award (Target Q2 2026)
- III. Post - IESO Contract Award
 - a. Project Permitting (Provincial Environmental and Municipal Land use) - Approximately 1 year (Q2 2026 to Q2 2027)
 - b. Construction - 9 - 12 months (Q2 2027 to Q1 2028)
 - c. Commercial Operation (+/- Q2 2028)

c. When will the project be decommissioned?

The project will be decommissioned at the end of operation, which will depend on if the project continues to operate after the contract term. Chute-a-Blondeau Agrivoltaics Inc. is responsible for carrying out all decommissioning activities and returning the project site to its original state at the end of the contract term.

d. Why is the project lifespan limited to only 25–30 years? Why doesn't it remain in operation longer?

After 25-30 years, the performance efficiency of solar panels drops, often making continued operation less economically viable unless equipment is replaced or upgraded.



COMPASS
GREENFIELD DEVELOPMENT

APPENDIX A

POSTERS FROM THE PUBLIC
COMMUNITY MEETING

WELCOME

TO THE PUBLIC OPEN HOUSE FOR

CHUTE-À-BLONDEAU

AGRIVOLTAICS



COMPASS
GREENFIELD DEVELOPMENT



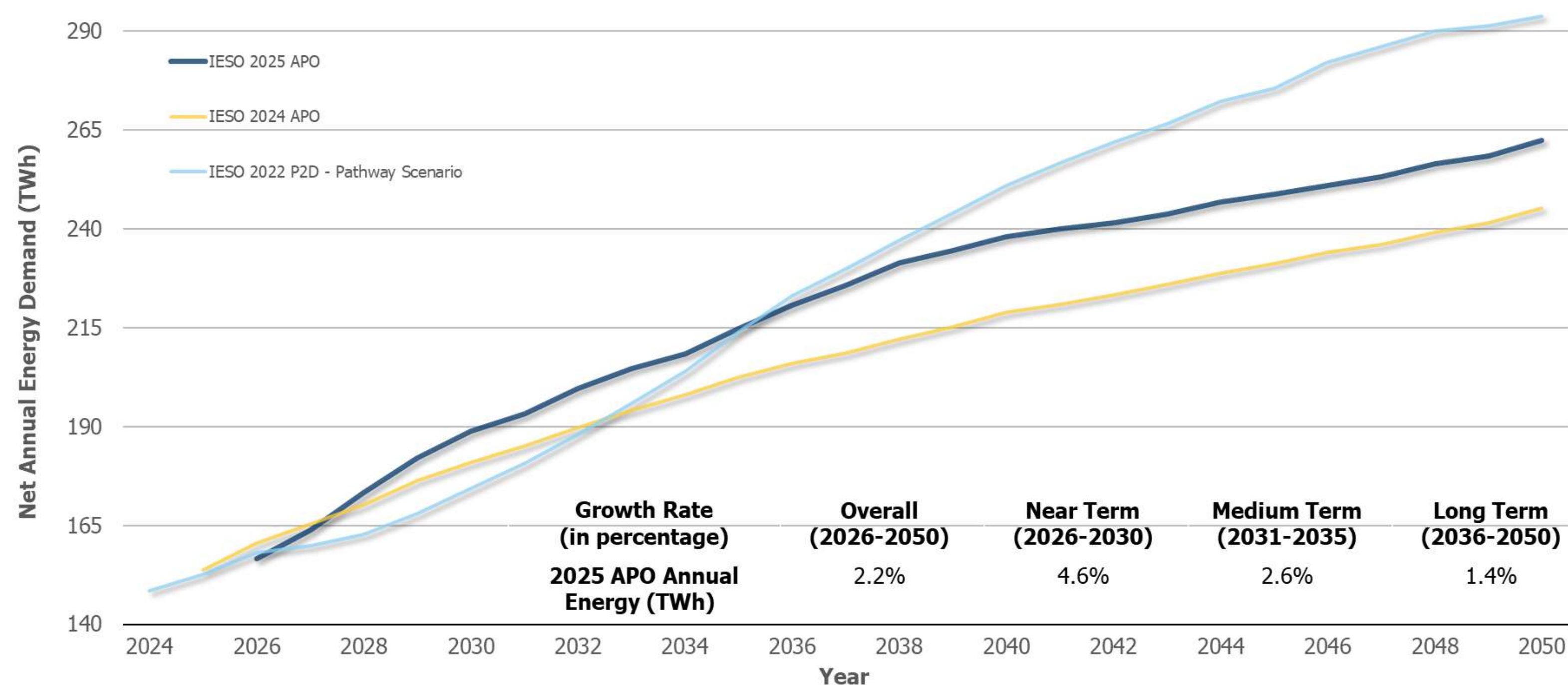


In October 2024, Ontario's Independent Electricity System Operator (IESO) updated its demand forecast for Ontario and indicated that it is anticipating a 75% increase in energy demand between 2025 and 2050.



Annual Energy Demand by Forecast

75% Demand Growth by 2050



What is Causing this Growth?

- Large increases in demand in the near and medium term
- Industrial sector and data centre growth are the primary drivers of new demand
- Industrial electric vehicle production and supply chain sub-sector
- Commercial sector growth, increasing population, and electrification are also continuing to escalate electricity demand across the province.
- To meet this demand growth, the IESO has planned multiple Long-Term 2 procurement windows, with the first submission deadline set for October 16, 2025 (Long-Term 2 RFP).



Long-Term 2 RFP
(IESO)

What is Agrivoltaics?

- Agrivoltaics is dual use of land for agricultural and solar generation activities.
- Agrivoltaics is already common in Ontario, where sheep are used on several projects to maintain the vegetation on solar farms.
- The Solar Projects fenced area provides protection for the flock and the panels provide shade, while the sheep maintain the vegetation.

CGD's Commitment to Agrivoltaics

Phase 1: Sheep Grazing

Sheep grazing on open fields in Eastern Ontario and amongst solar arrays.



Phase 2: Crop Production

The field of agrivoltaics continues to advance. Soil and water resource dependent, CGD is committed to establishing crop production at Chute-à-Blondeau agrivoltaics over the life of the proposed project.

[Learn More About Agrivoltaics](#)



About the Proposed Project



 Parcel Boundary

Project Name
Chute-à-Blondeau Agrivoltaics

Developer
Compass Greenfield Development

Max Name Plate Capacity
18 MW

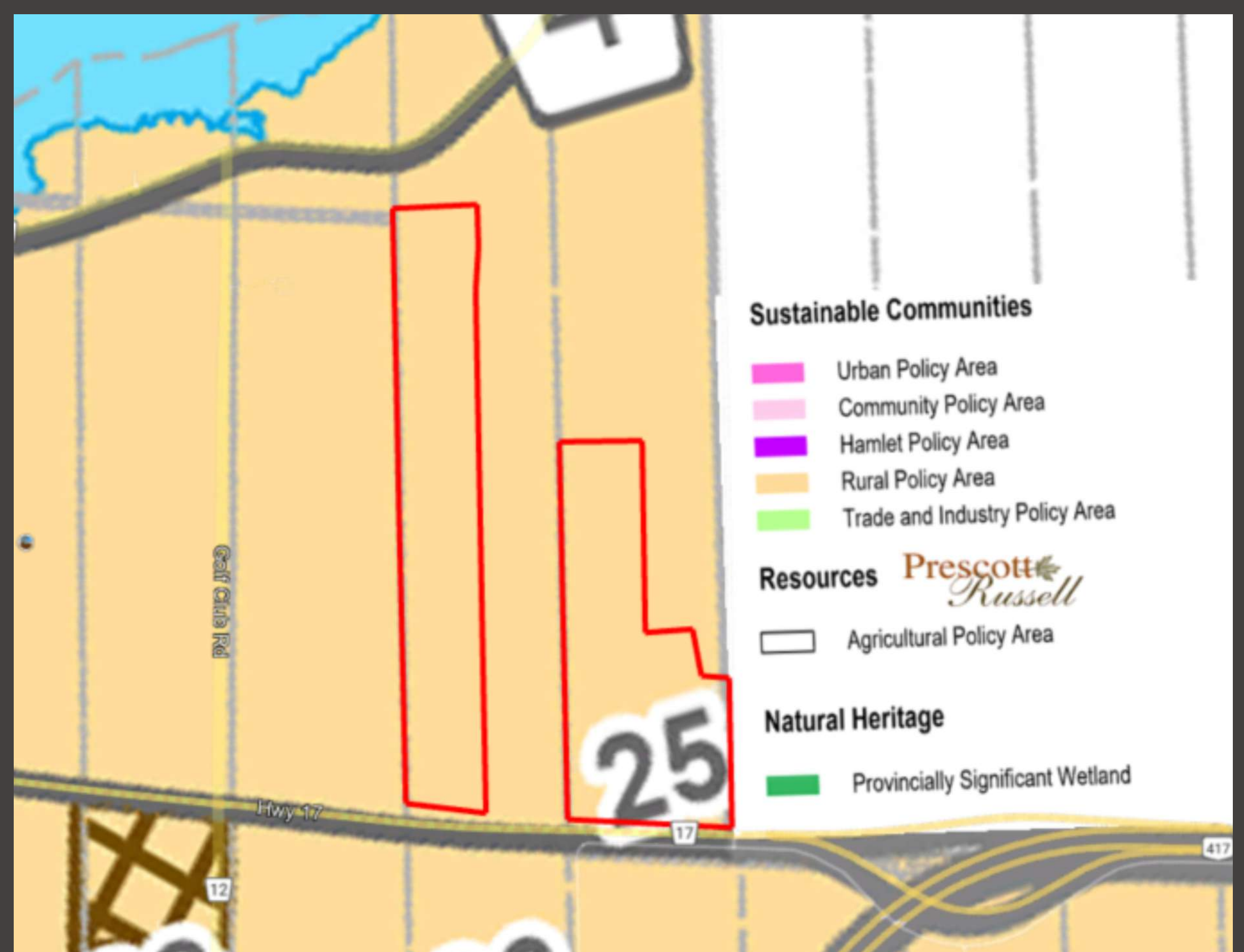
Property Identification Number (PIN)
54186-1019, 54186-1028

Technology
Solar (Agrivoltaics)

Main Intersection Location
Hwy 17 & Gourley Road

Main Intersection Location
Original Parcel (54186-1019) and Expansion Parcel (54186-1028) directly connecting directly to Hydro One feeders along Hwy 17 that tie into the Longeul Transformer Station.

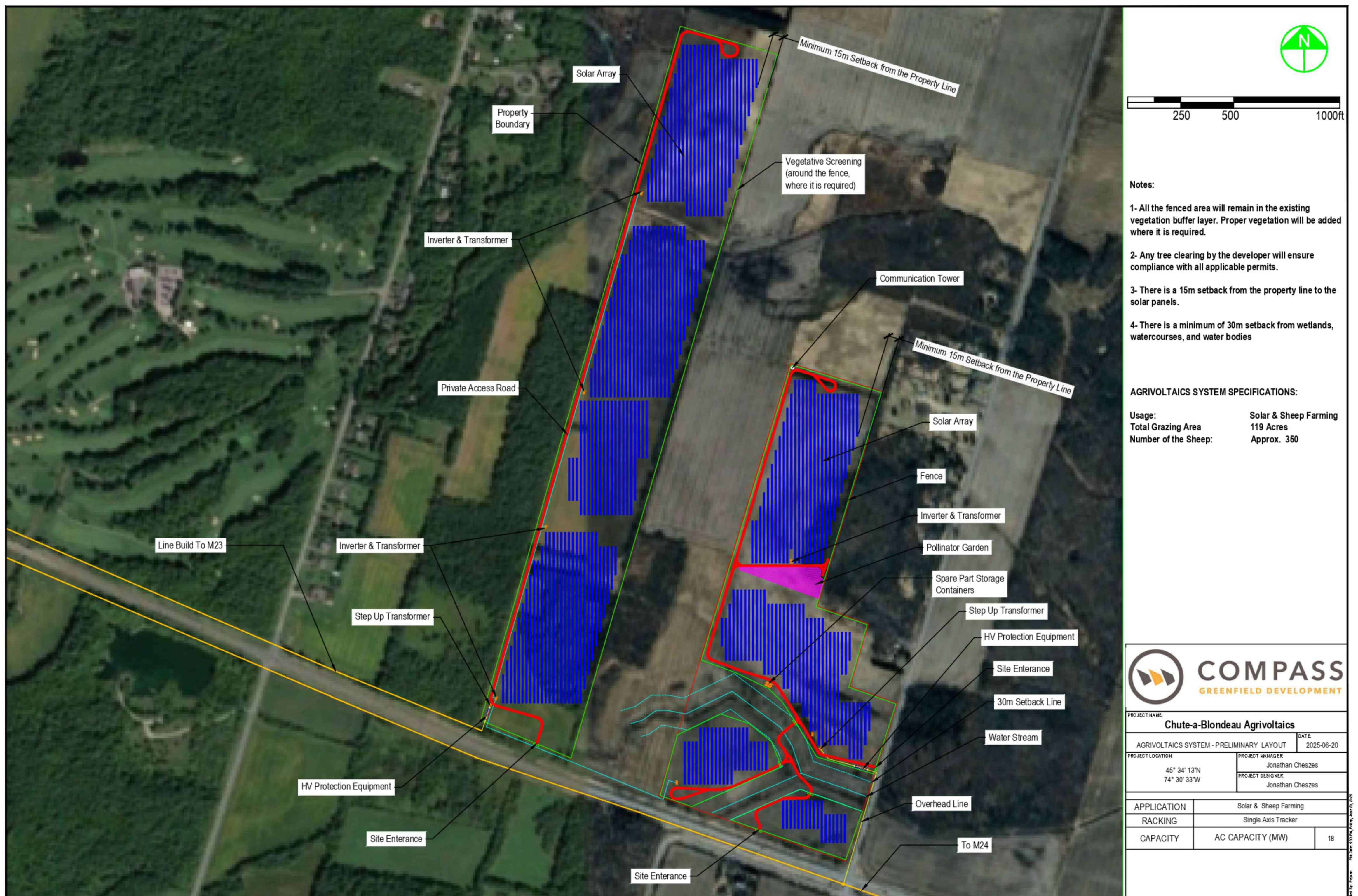
Official Plan Designation



Project Website
chute-a-blondeauagrivoltaics.ca

Contact
info@chute-a-blondeauagrivoltaics.ca

Preliminary Project Design



Racking Foundations

Steel piles are screwed into the ground. At decommissioning, piles can be removed, and the land use is returned to its prior state.

Racking Design and Spacing

Rows are typically 25 feet apart. The racking will either be fix-tilt or tracking.

Footprint Size

Approximately 119 acres.

Visual Screening

Commitment to add vegetative buffer along perimeter where it doesn't already exist.

Security

Project is fenced in and locked.

Operations

Project is 24/7 remote monitored and controlled. Operations and maintenance contractors are locally based in Ontario. Scheduled site visits occur 4 times a year.

Interconnection

The solar system is connected to the Hydro One distribution grid.



Decommissioning Security

Will be posted mid-way through the project's contract to ensure funds to pay for decommissioning are available.

Agrivoltaics

Chute-à-Blondeau Agrivoltaics will be home for sheep farming.

Why your Municipality?



The development of solar energy on private lands aligns with the Township of East Hawkesbury's commitment to mitigating climate change. Furthermore, the United Counties of Prescott and Russell Official Plan expresses support for solar development.



Township of East Hawkesbury Energy Management Plan

Page 3: The Township of East Hawkesbury's Energy Management Plan states it "aspires to show leadership in the promotion and development of renewable energy systems that are compatible with our asset management and land use planning objectives."

United Counties of Prescott and Russell Official Plan

3.6 ENERGY CONSERVATION, AIR QUALITY AND CLIMATE CHANGE

Promote development, design and building orientation which maximize the use of alternative or renewable energy, such as solar and wind energy.

Community Benefits

Optimize Land use

During Solar operations, sheep grazing will be present at the project site. It is planned that a second phase of crop growing will also be incorporated.

Diversified income stream for local landowners

Keep landownership within your municipality.

A stronger local energy grid

Distributed connected energy generators add to a municipality's electrical grid resiliency.

Job creation, local economic stimulus

Construction will lead to a creation of jobs. On-site activity will boost the revenues of local business.

Community Benefit Agreement (CBA)

CGD will commit to an annual payment of \$1,000 / MWac to the municipality

CGD will pay for any third-party costs related to permit reviews incurred by the municipality to support this project.

Increased tax base for the municipality

Regulatory Compliance

Compass Greenfield Development has made careful note of the regulatory bodies that it must engage to secure the permits and approvals.

- The Township of East Hawkesbury
- Hydro One
- Ontario Ministry of Energy and Electrification
- Independent Electricity System Operator
- Ontario Ministry of Environment, Conservation and Parks
- Local Conservation Authorities
- Electrical Safety Authority

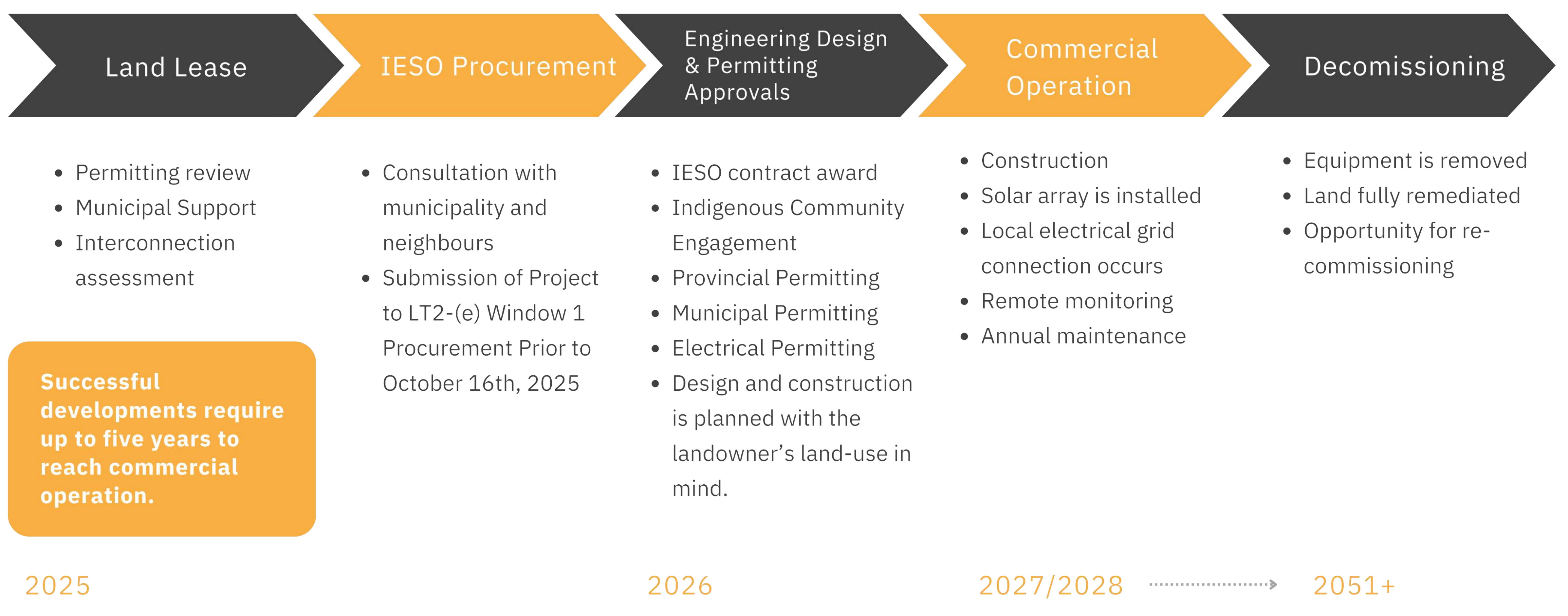


Environmental Compliance

Compass Greenfield Development is committed to the health and safety of the communities we develop in and work with regulatory bodies to obtain and comply with permits, as such we will thoroughly study:

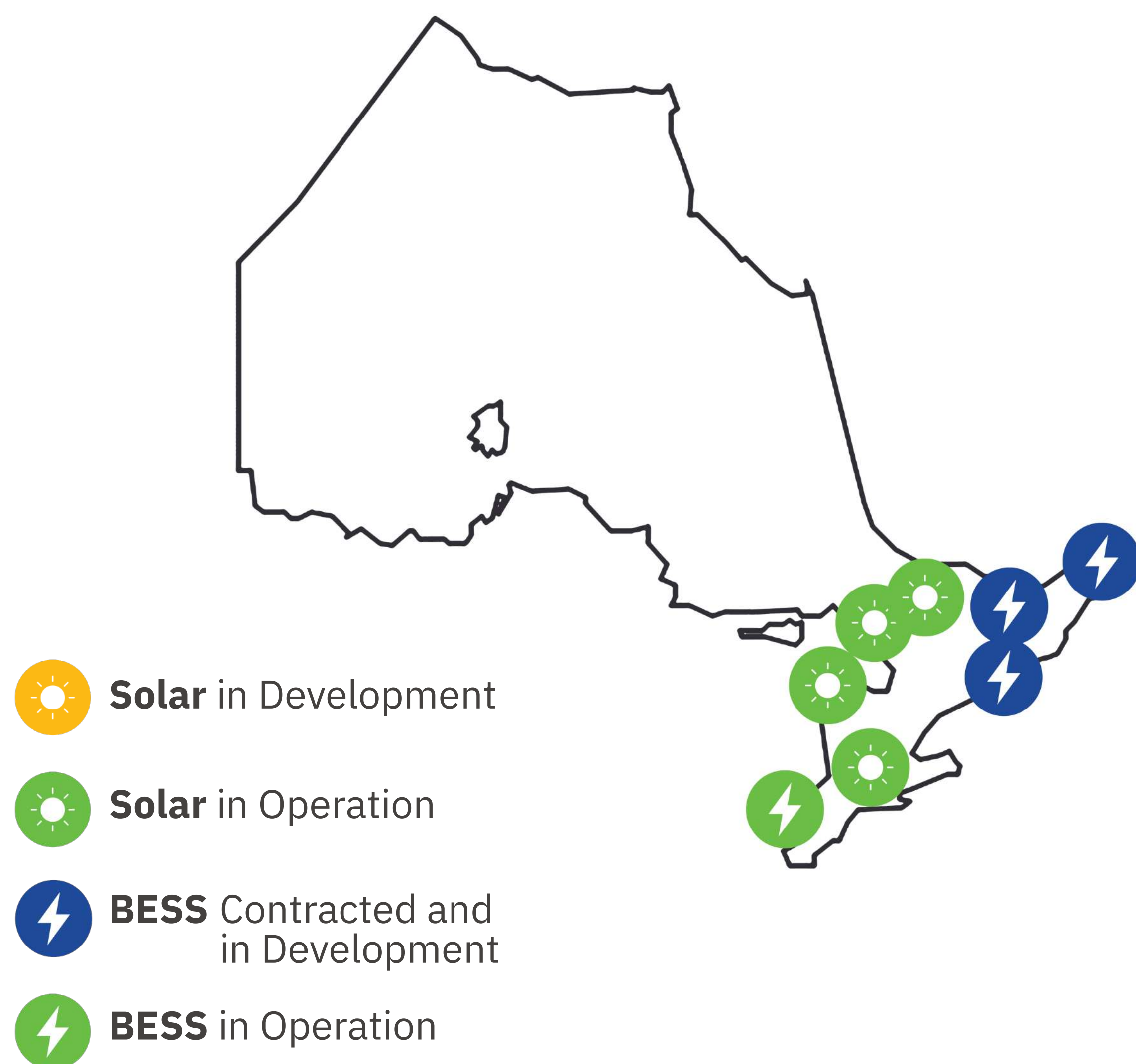
- Species at Risk
- Wetland and Watercourses
- Sound Emissions

Development Timeline

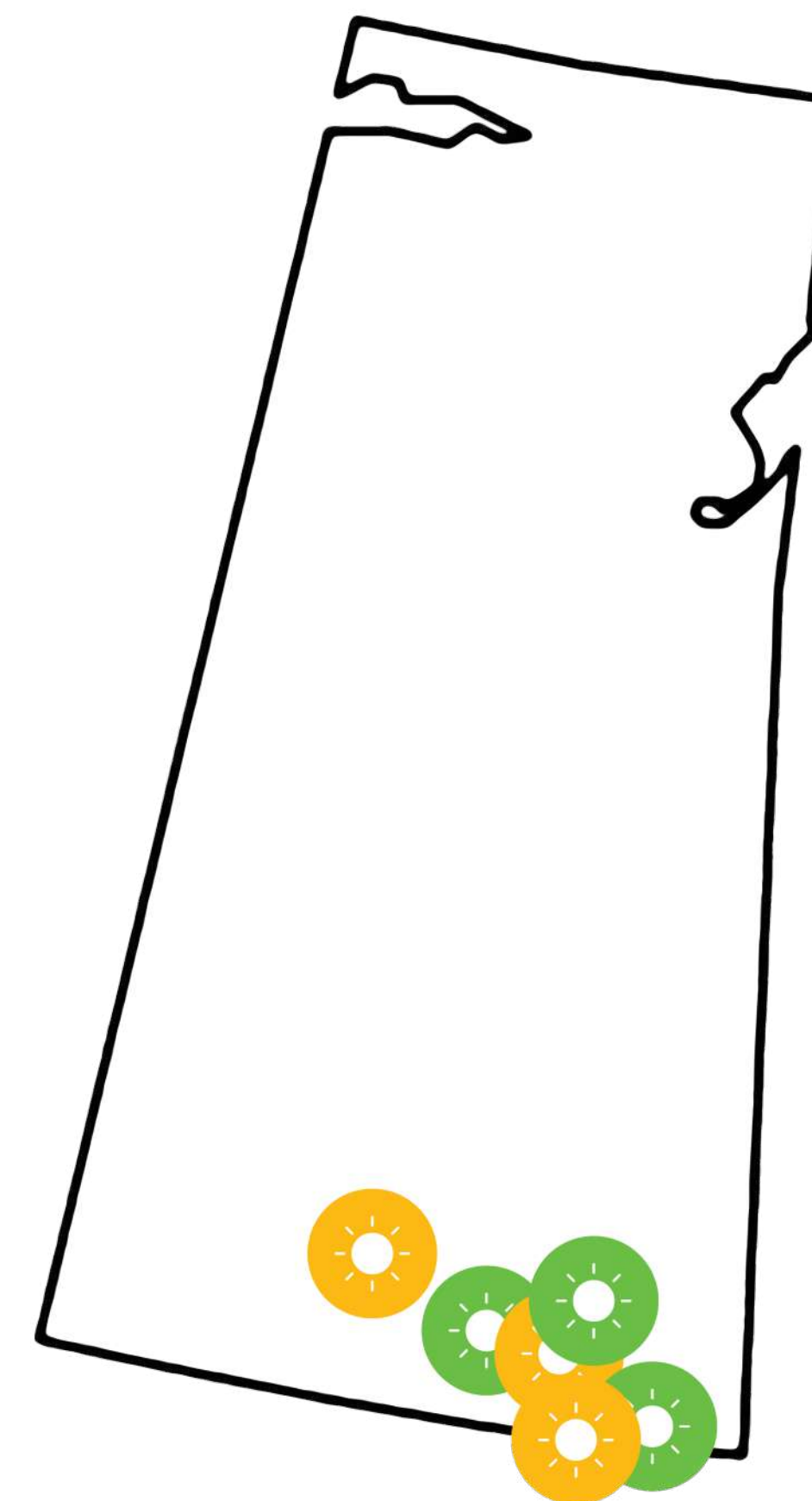


Successful developments require up to five years to reach commercial operation.

Ontario



Saskatchewan



In total, Compass has over 50 MW of solar and battery storage operating, under construction or contracted, and an additional 500 MW in early stages of development in ON and SK.

10 + years Experience in Energy Development in Ontario

- An industry leader in renewable and clean energy development across Ontario.
- We have developed over 100 renewable energy projects in Ontario representing over 100 megawatts (MW) in the last 6 years
- Track record of success with principles that designed and launched Ontario's renewable and clean energy procurements in the public sector.
- Awarded six projects representing over 46 MW/200 MWh of battery energy storage in the last two IESO Procurements.



Recap: April 23rd Community Meeting

Topics addressed were as follows:

- Visual Barriers
- Agrivoltaics Component of the Project
- Property Values
- Benefits of the Project
- Selection Criteria for the Project Site
- Preliminary Project Design
- Environmental Impacts of the Project
- Project Timeline
- Health & Safety Concerns

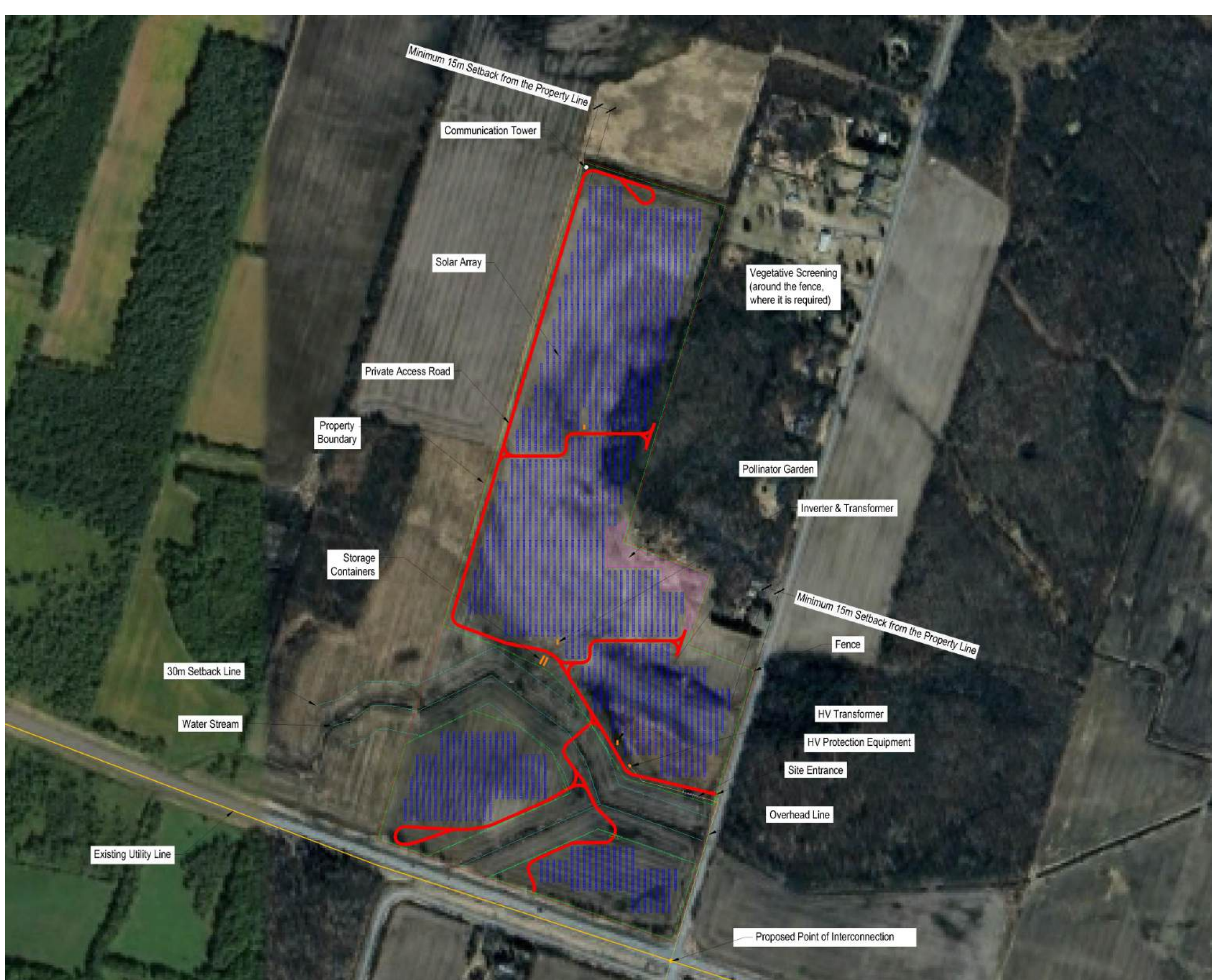
Minutes from our previous community meeting were uploaded May 10th, 2025 and can be found on our project website:

Project Website
www.chute-a-blondeauagrivoltaics.ca

Contact
info@chute-a-blondeauagrivoltaics.ca



Changes to Preliminary Design



Previous Design



New Design

Summary of Design Changes in New Proposed Project:

- New Land signed to expand Project on a new Property to the West of the Original Property
- Increase in Maximum Contract Capacity from 9.5 MWac to 18 MWac



COMPASS
GREENFIELD DEVELOPMENT

APPENDIX B

PHOTOGRAPHS FROM THE
PUBLIC COMMUNITY MEETING

WELCOME
TO THE PUBLIC OPEN HOUSE FOR
CHUTE-À-BLONDEAU
AGRIVOLTAICS



Bienvenue
à la journée portes ouvertes
publique pour l'agrivoltaïque de
Chute-à-Blondeau









EXIT

Conformité réglementaire
 Conformité réglementaire

Conformité environnementale
 Conformité environnementale

Calendrier de Développement
 Calendrier de Développement

Regulatory Compliance
 Regulatory Compliance

Environmental Compliance
 Environmental Compliance

Development Timeline
 Development Timeline

Why your Municipality?
 Why your Municipality?

Community Benefits
 Community Benefits

Pourquoi votre municipalité ?
 Pourquoi votre municipalité ?

Avantages pour la communauté
 Avantages pour la communauté